

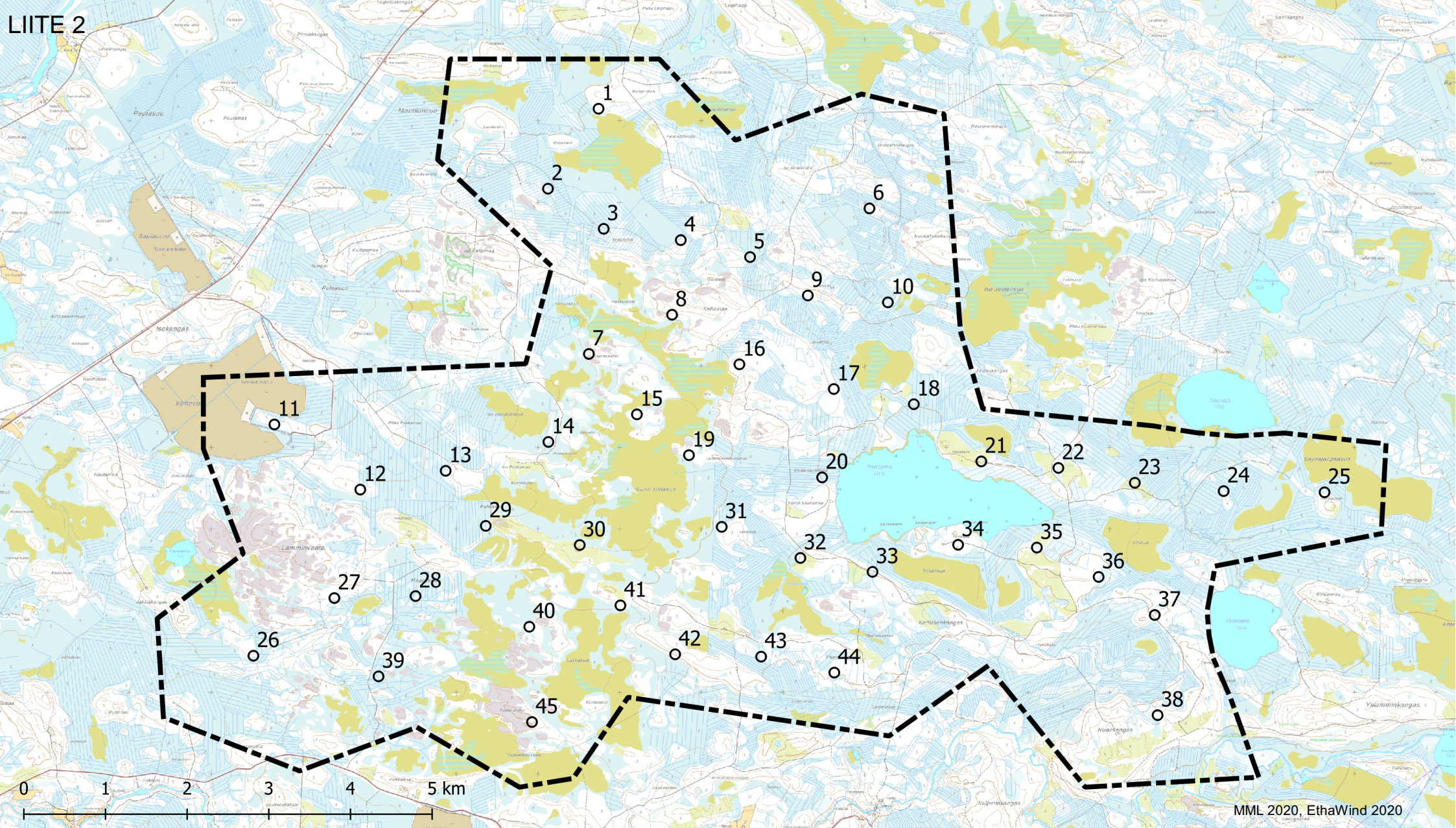


TUULIPUISTO PONTEMA UTAJÄRVI



VE1, 51 VOIMALAA

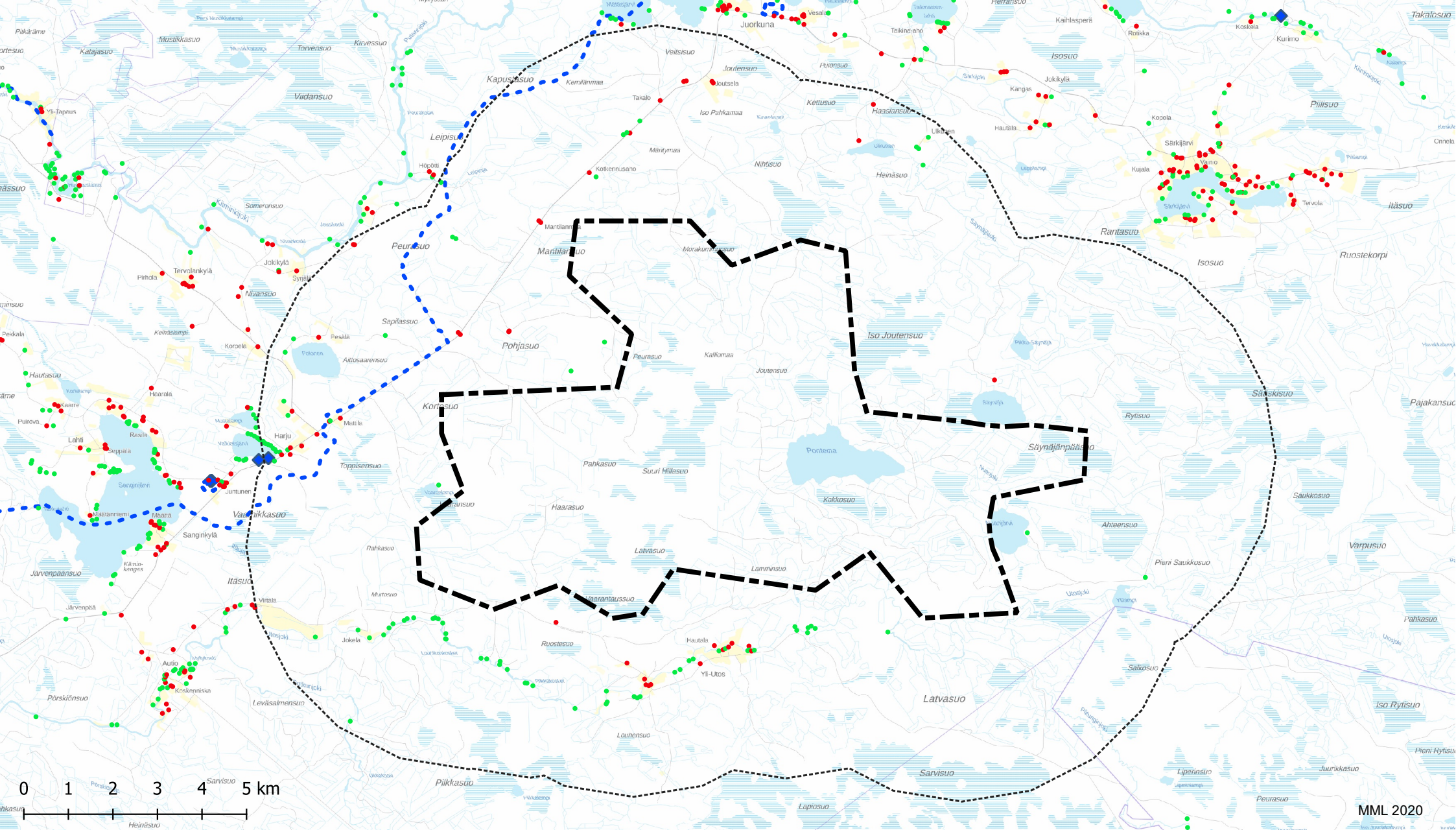
-  hankealue
-  voimalapaikka



TUULIPUISTO PONTEMA UTAJÄRVI



VE2, 45 VOIMALAA



-  hankealue
-  voimalapaikka





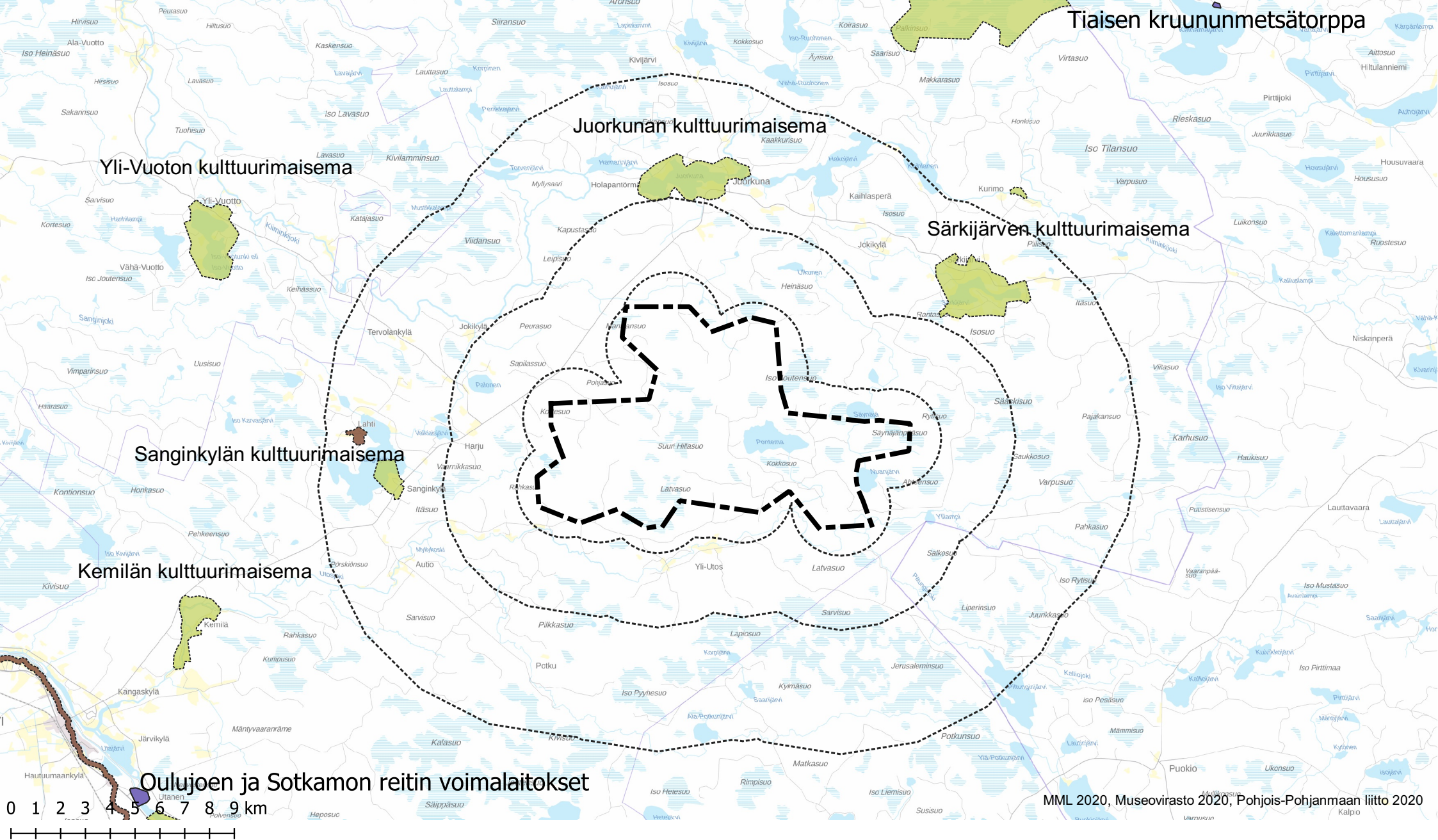
TUULIPUISTO PONTEMA UTAJÄRVI

ASUTUS, VIRKISTYS

-  hankealue
-  etäisyysvyöhyke 5 km

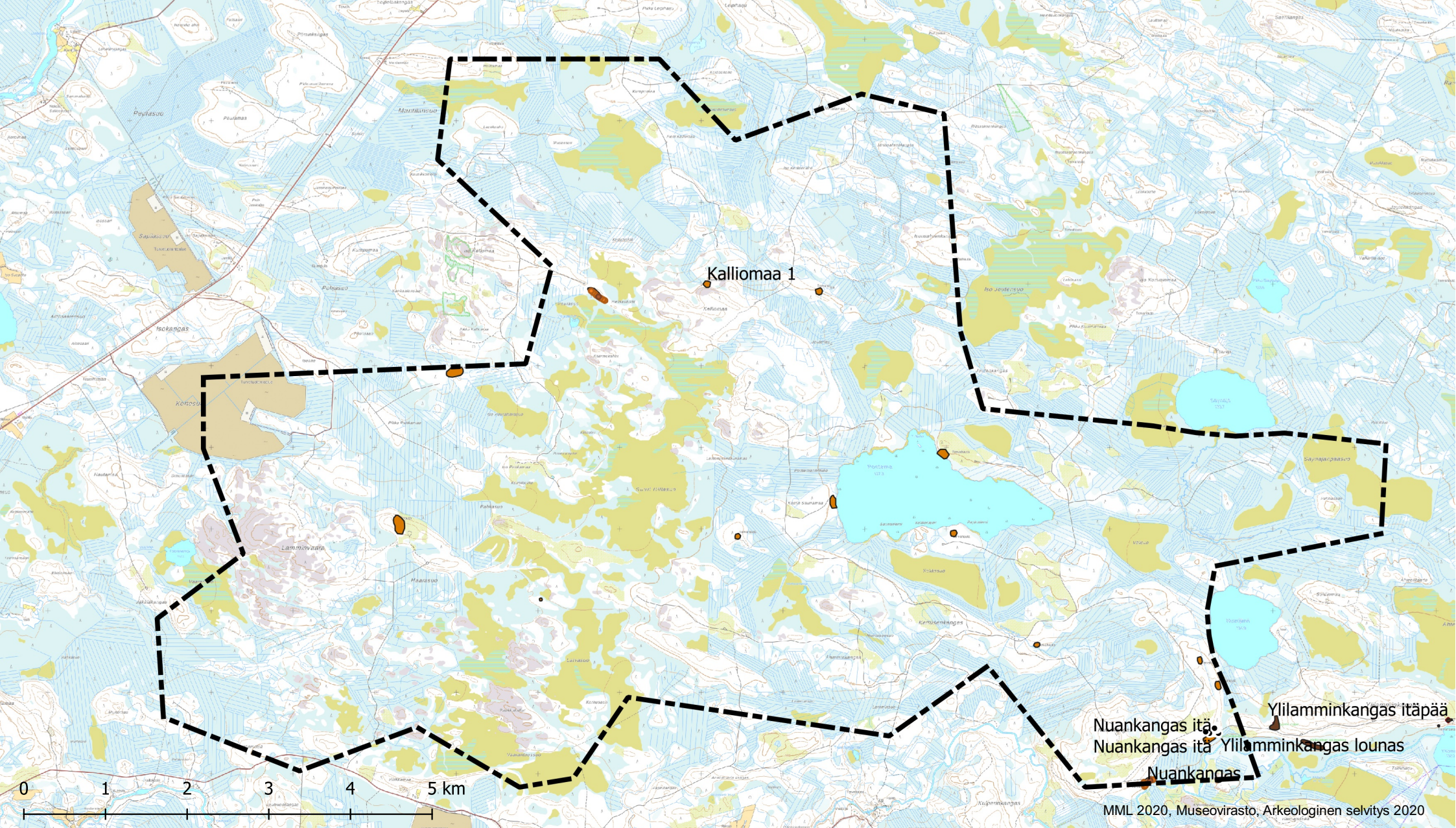
-  asuinrakennus
-  loma-asunto

-  virkistys, kohteet
-  virkistys, reitit






TUULIPUISTO PONTEMA UTAJÄRVI





MAISEMA, RAKENNETTU KULTTUURIYMPÄRISTÖ





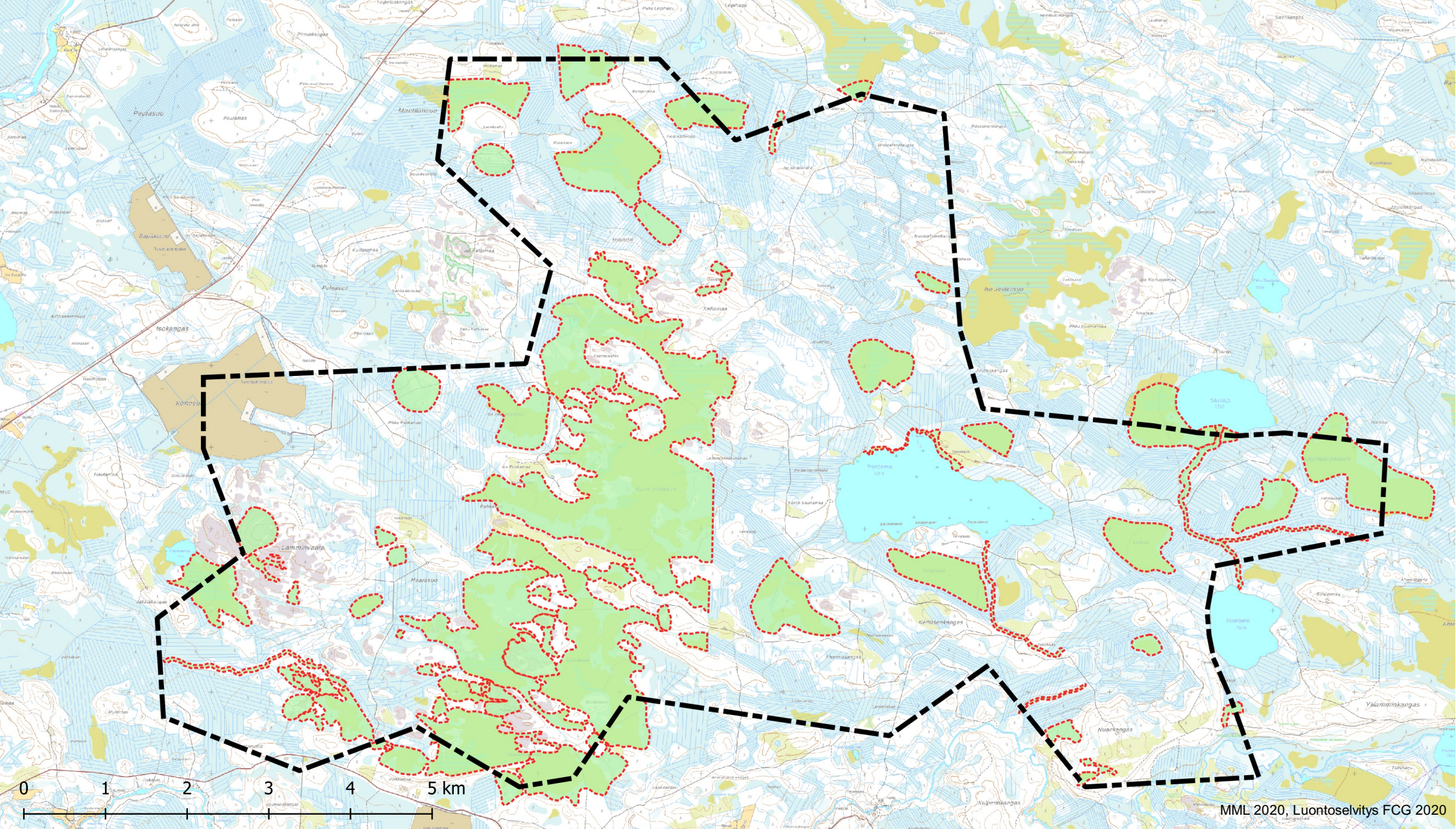
TUULIPUISTO PONTEMA UTAJÄRVI

ARKEOLOGISET KOHTEET

-  hankealue
-  tunnettu muinaisjäännös, kohde
-  tunnettu muinaisjäännös, alue



-  uusi muinaisjäännös, kohde
-  uusi muinaisjäännös, alue
-  uusi muinaisjäännös, alakohde
-  uusi kulttuuriperintökohde

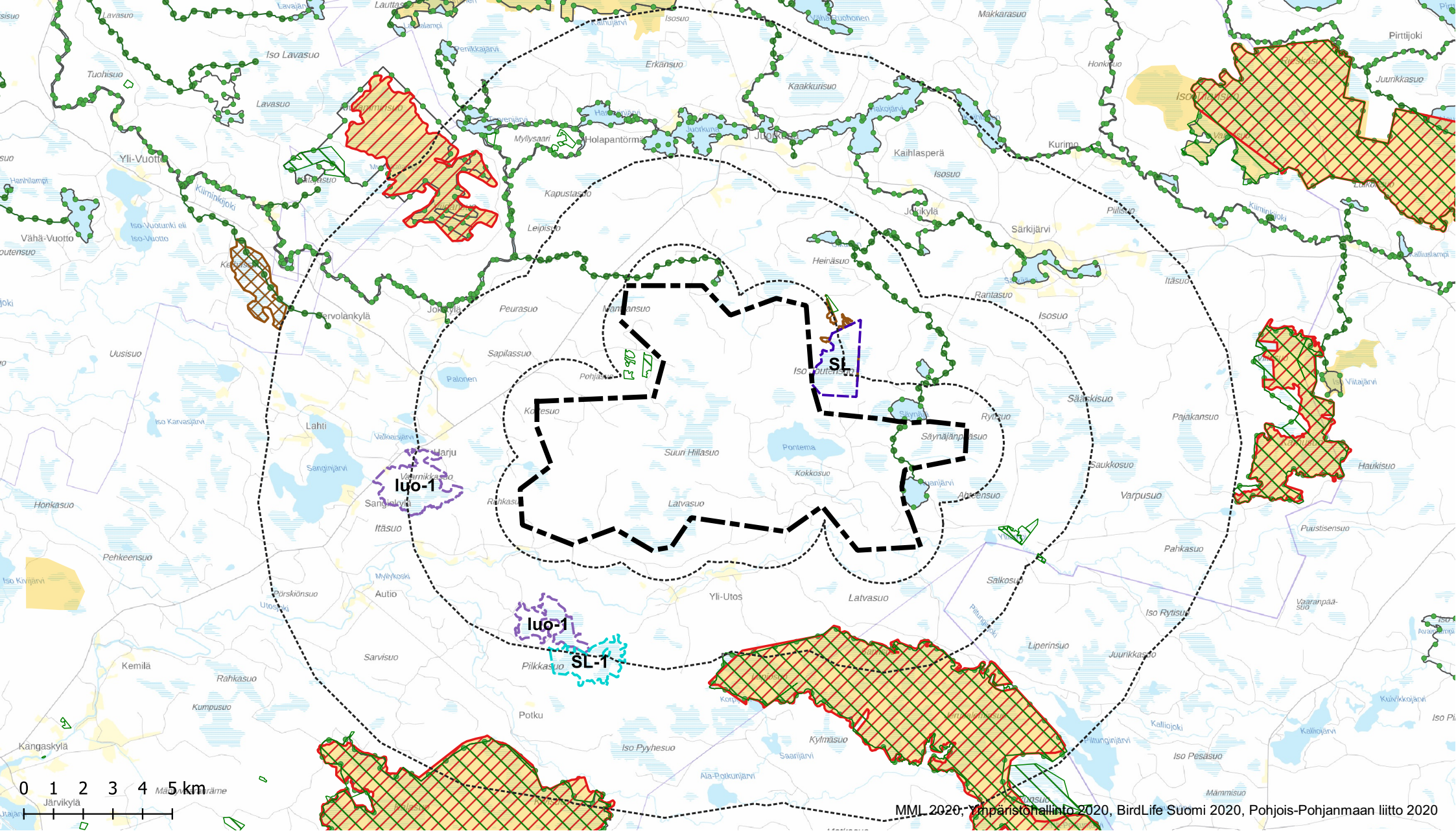
-  uusi kulttuuriperintökohde, alue
-  uusi kulttuuriperintökohde, alakohde



TUULIPUISTO PONTEMA UTAJÄRVI

ARVOKKAAT LUONTOKOhteet

-  hankealue
-  luontokohteet, luontoselvitys 2020



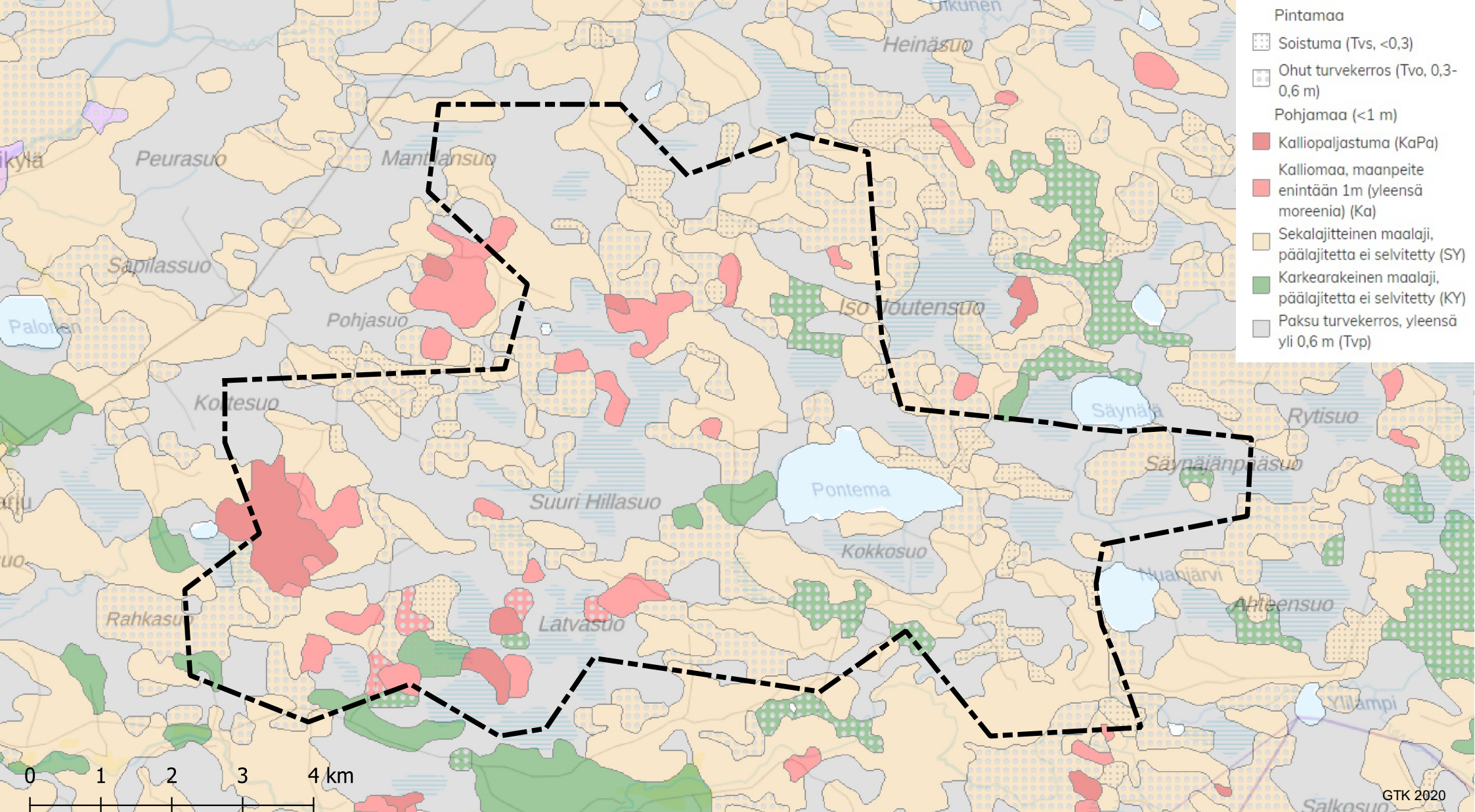
MML 2020; Ympäristöhallinto 2020, BirdLife Suomi 2020, Pohjois-Pohjanmaan liitto 2020

TUULIPUISTO PONTEMA UTAJÄRVI

LUONNONSUOJELU

- | | | | |
|-------------------------------|------------------------|----------------------------------------|-------|
| hankealue | Natura-alue | Suomen arvokas lintualue (FINIBA) | luo-1 |
| etäisyysvyöhyke 2, 5 ja 10 km | luonnonsuojelualue | soidensuojeluohjelman täydennysehdotus | SL |
| soidensuojeluohjelma | luonnonsuojeluohjelmat | | SL-1 |





TUULIPUISTO PONTEMA UTAJÄRVI

MAAPERÄ

hankealue